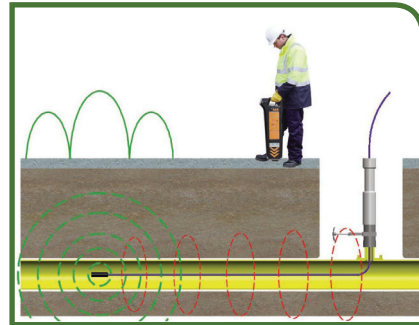




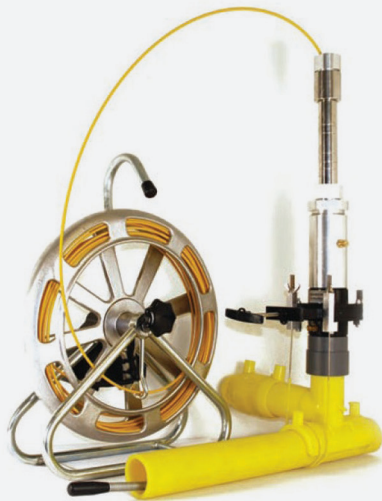
Live access tool enabling tracing of PE pipes and services using tip tracing

Stargland™

- Mains application approved up to 2 barg
- Service application approved up to 75 mbar
- Allows tracing up to 50m in gas service pipes and 160m in mains
- Connects to service diameters 16mm, 20mm, 25mm & 32mm
- Connects to 63mm PE top tee for mains



- Significantly reduces excavation, reinstatement and associated activities
- Enables PE pipe systems to be accurately identified
- Reduce operational costs



- Unique Stargland™ gas seal
- Compatible with 20m CScope and 50m CScope tracing wire
- 80m mains tracing tip available
- Can be used with various types of Emergency Control Valves



Live Gas access system



PE tip tracing in services & mains



Accurately map route



Reduce excavation & reinstatement



SYNTHOTECH

Synthotech Limited

Milner Court, Hornbeam Square South, Hornbeam Park, Harrogate HG2 8NB

info@synthotech.com