



Water Solutions

PipeMic© XL & XXL In-Pipe Leak Detection

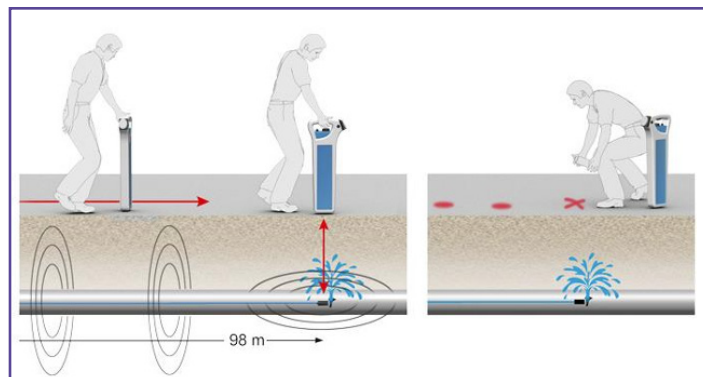
The PipeMic© XL and XXL from FAST are the original In-Pipe Leak Detection tool for pressurised live water mains.

The PipeMic© XL and XXL are in-pipe acoustic leak detection systems. The innovative tip houses an acoustic sensor that can detect leaks from within the pipe. When a leak has been located the line of the pipe can be detected by line tracing the PipeMic©, and then accurately pinpointing the tip by tip tracing the acoustic sensor. The PipeMic© Flex is a fast accurate methodology of tracing mains pipes over a longer distance.



Features

- High sensitivity
- Can be used down to pressures as low as 1bar
- Uses standard CAT and Genny equipment for tracing
- Bluetooth the sound to either speakers or headphones.
- 10bar aqualock seal
- Chlorination tank and wiper seal
- Works from standard 9v battery
- XL - 150m and XXL - 300m
- Multiple access opportunities



The PipeMic© uses a simple Bluetooth connection to either an external speaker or a set of headphones. The unit also contains a light bar to visually show the acoustic noise register all operated by a 9v battery.

The PipeMic© XL and XXL are currently not WRAS compliant but can be used under the Drinking Water Inspectorate Small Surface Area Products (regulation 31 (4) (b))

The PipeMic© XL/XXL use a robust 9mm diameter rod which allows it to push long distances in live water pipes. The XL has 150meters x 9mm diameter rod and the XXL has 300meters x 9mm diameter rod.

CONTACT OUR TEAM TODAY TO DISCUSS YOUR REQUIREMENTS
01249 816181 > info@hmglocation.co.uk > www.hmglocation.co.uk

©2021 HMG Water Solutions Ltd. All rights reserved to make changes to design and specification without prior notice or consent. E&OE





Water Solutions

PipeMic© XL & XXL
In-Pipe Leak Detection

Product Specification		
Product	PipeMic© XL	PipeMic© XXL
Part Number	300107	300108
Material	Fibreglass rod, brass, aluminium, and EPDM rubber	
Compliance with WRAS	The PipeMic XL and XXL are not manufactured from WRAS compliant material or material that meets with BS6920. They are compliant to Drinking Water Inspectorate Small Surface Area Products (regulation 31 (4) (b)). Full assessment available upon request.	
Length	150m	300m
Operating Pressure	From 1Bar up to 10Bar	
Location Depth	Up to 3.5m*1	
Operating Temp Range	-0°C to +50°C	
IP Rating	IP66 / IP68	
Connection	Geka Fittings (Non-WRAS)	
Batteries	1 x 9V Alkaline Battery PP3 (anticipated usage up to 12 hours operational used)	

Access Systems	
End on to Service Pipes	Through a valve – Connect to the valve using an adaptor
End on to Service Pipes	Use a Philmac fitting end or equivalent following a squeeze off operations
Through PE Top Tees into small diameter mains	Insert through 63mm PE top tees using our Stargland Kit H2O
Through Saddles into small diameter mains	Insert through a Torres Golf Saddle using a Pressure Balanced Tube and a saddle adaptor
Through Hydrants into small diameter mains	Insert through a through bore hydrants using a Pressure Balanced Tube

PipeMic System	
Part Number	Description
300107	PipeMic© XL 150m – 9mm semi-rigid rod
300108	PipeMic© XXL 300m – 9mm semi-rigid rod

Each PipeMic© system comes with as standard,

- Inbuilt, Acoustic Sensor, Sonde and a mechanical length counter
- External Bluetooth Speaker, External Chlorination Tank, Banana Connection Leads (2 x 50cm 4mm connections)

*1 dependent on location and tracing equipment used and ground conditions

PipeMic© is a trademark of FAST GMBH

CONTACT OUR TEAM TODAY TO DISCUSS YOUR REQUIREMENTS
01249 816181 > info@hmglocation.co.uk > www.hmglocation.co.uk

©2021 HMG Water Solutions Ltd. All rights reserved to make changes to design and specification without prior notice or consent. E&OE

WWW.HMGLOCATION.CO.UK

01249 816181

LOCATE : SURVEY : DETECT

WWW.HMGLOCATION.CO.UK

